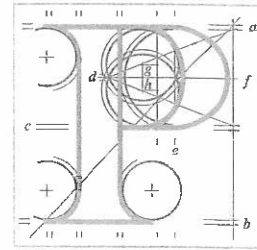


Our Ref: 61.PA0033
P.A.Reg.Ref:

Your Ref:



An
Bord
Pleanála

National Parks and Wildlife Service
Oak House
Bessborough Road
Cork
T12 D6CH

1st March 2022

Re:
Galway Harbour Extension
Renmore and Townparks Townlands, Galway

Dear Sir/Madam,

I refer to your email dated 22nd February, 2022.

The Board acknowledges the comments made by the Department in its letter dated 3rd August 2021 in relation to the reference in its Board Decision to the impacts of the previously developed Galway Harbour Enterprise Park on the integrity of the Galway Bay Complex SAC.

Having reflected on the matter and the points raised, the Board can confirm that the focus of its assessment will be solely on the scope and adequacy of the compensatory measures proposed in respect of the adverse effects that will arise from the proposed development of the harbour extension, and will not be basing its assessment on any compensatory measures to address earlier habitats impacts or losses arising from previous developments in the general area, but not associated with the proposed development before the Board for consideration. We have communicated this approach to the applicant who we understand will be reviewing and revising its documentation on foot of the further engagement with the National Parks and Wildlife Service and will take account of this approach in this regard.

If you have any queries in relation to this matter please contact the undersigned officer of the Board.

Yours faithfully,

Niamh Thornton
Executive Officer
Direct Line:01-873 7247

AA05.LTR



